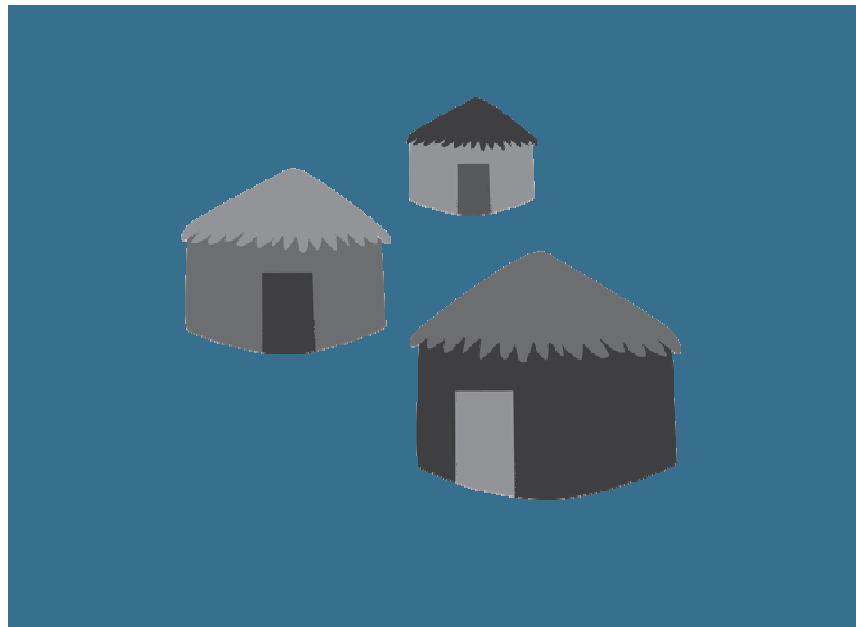


Institutionalizing Community Health Conference



27-30 March 2017 | Johannesburg, South Africa

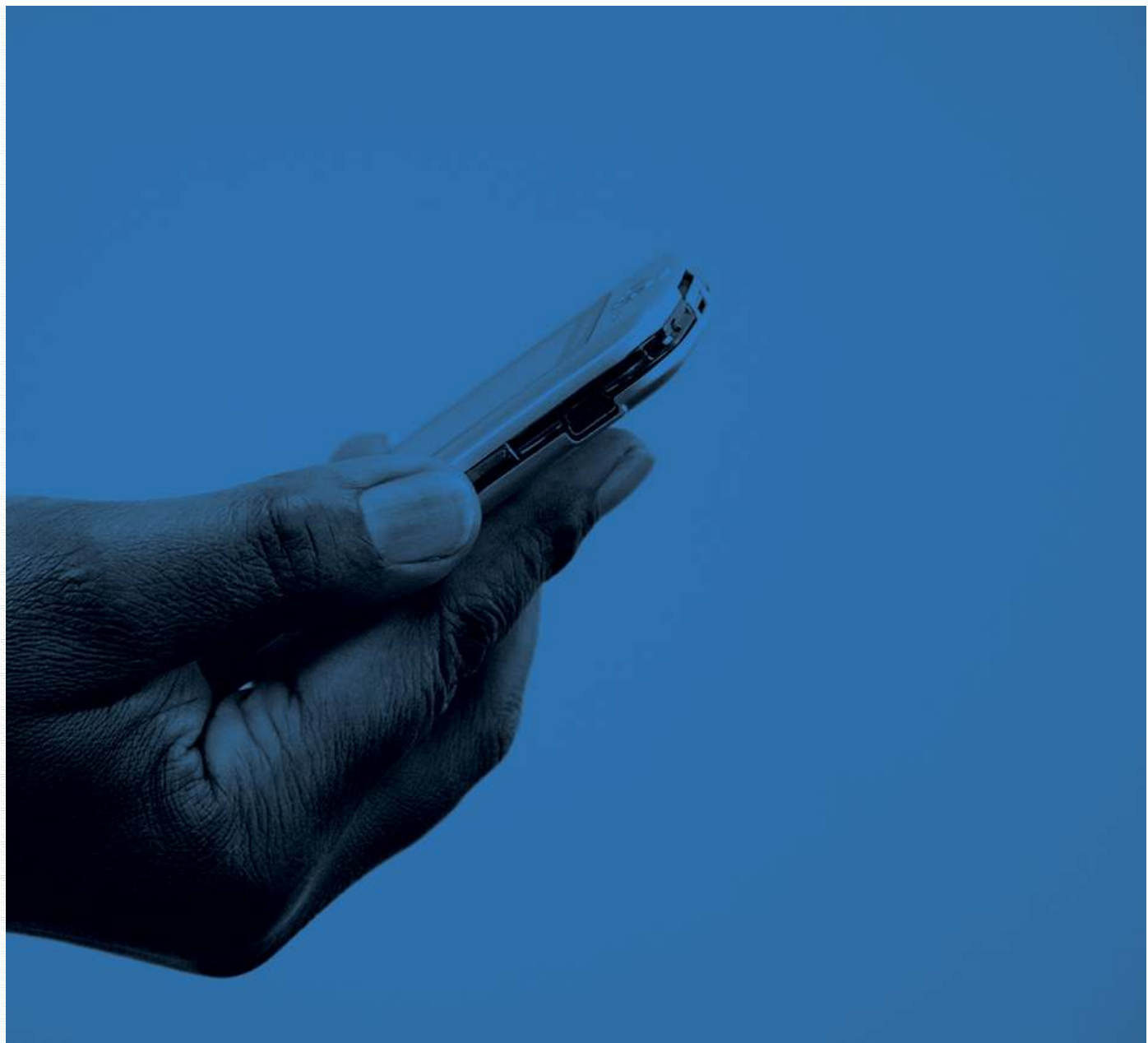


#HealthForAll
ichc2017.org



mHero: Connecting Community Health Workers to their Support System

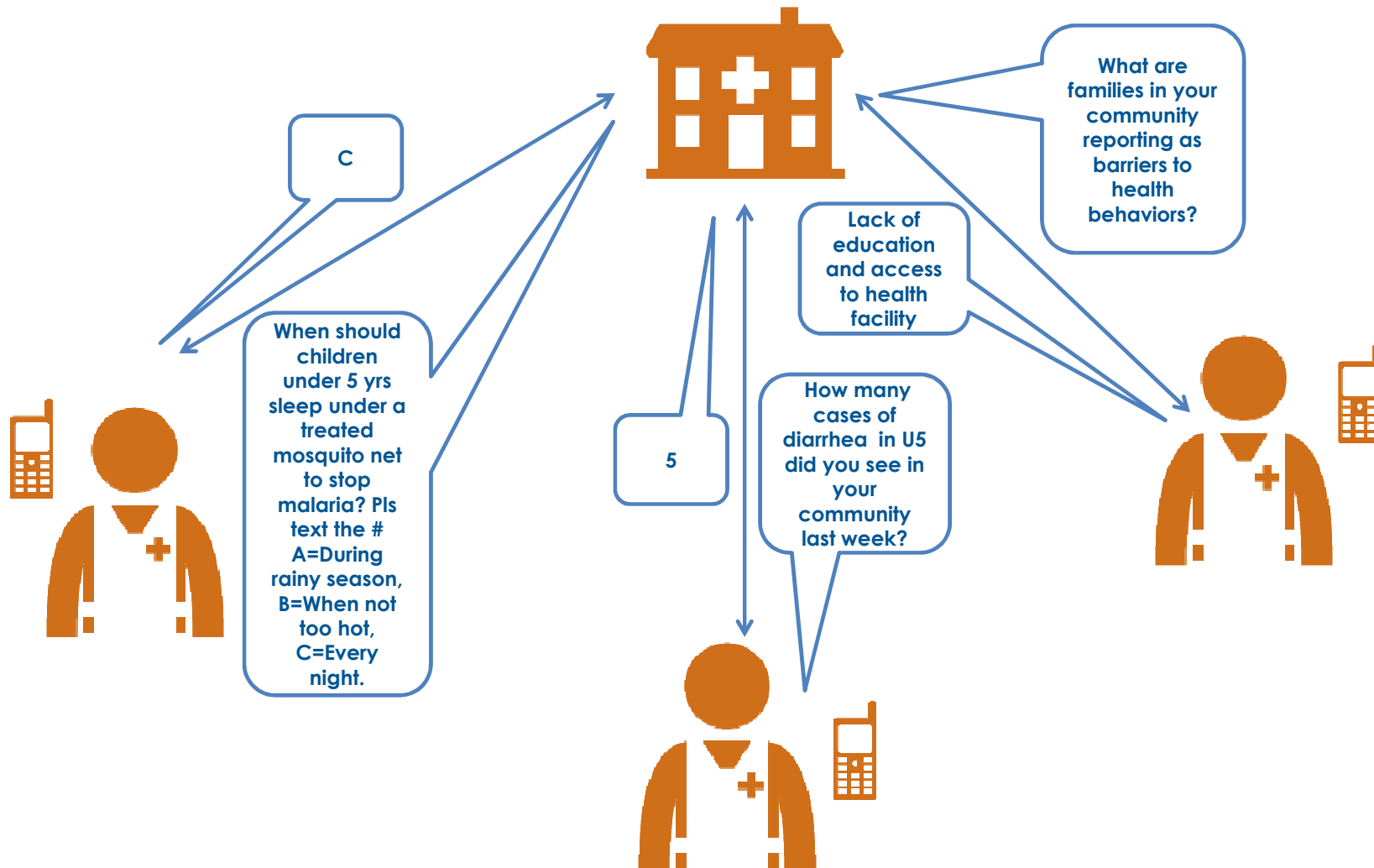
Leah McManus
IntraHealth International



Connecting Community Health Workers to their Support System



What is mHero?



mHero & General Community Health Volunteers in Liberia

Routine

One Way

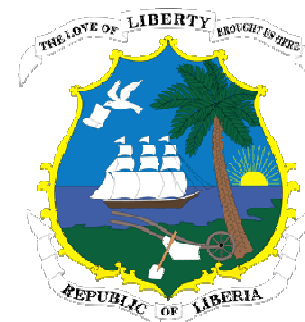
Sent by MOH

Non Routine

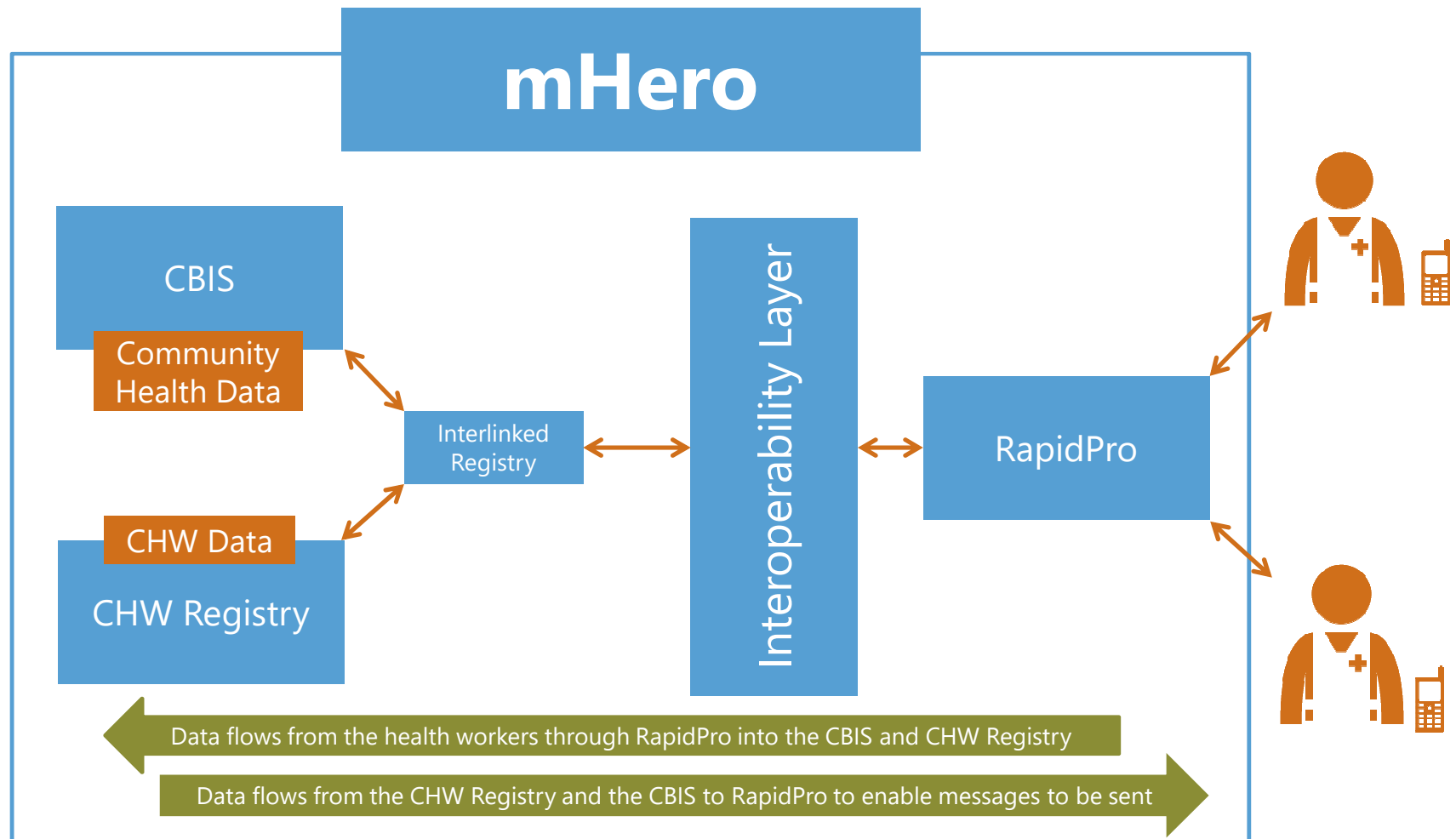
Two Way

Sent by CHW

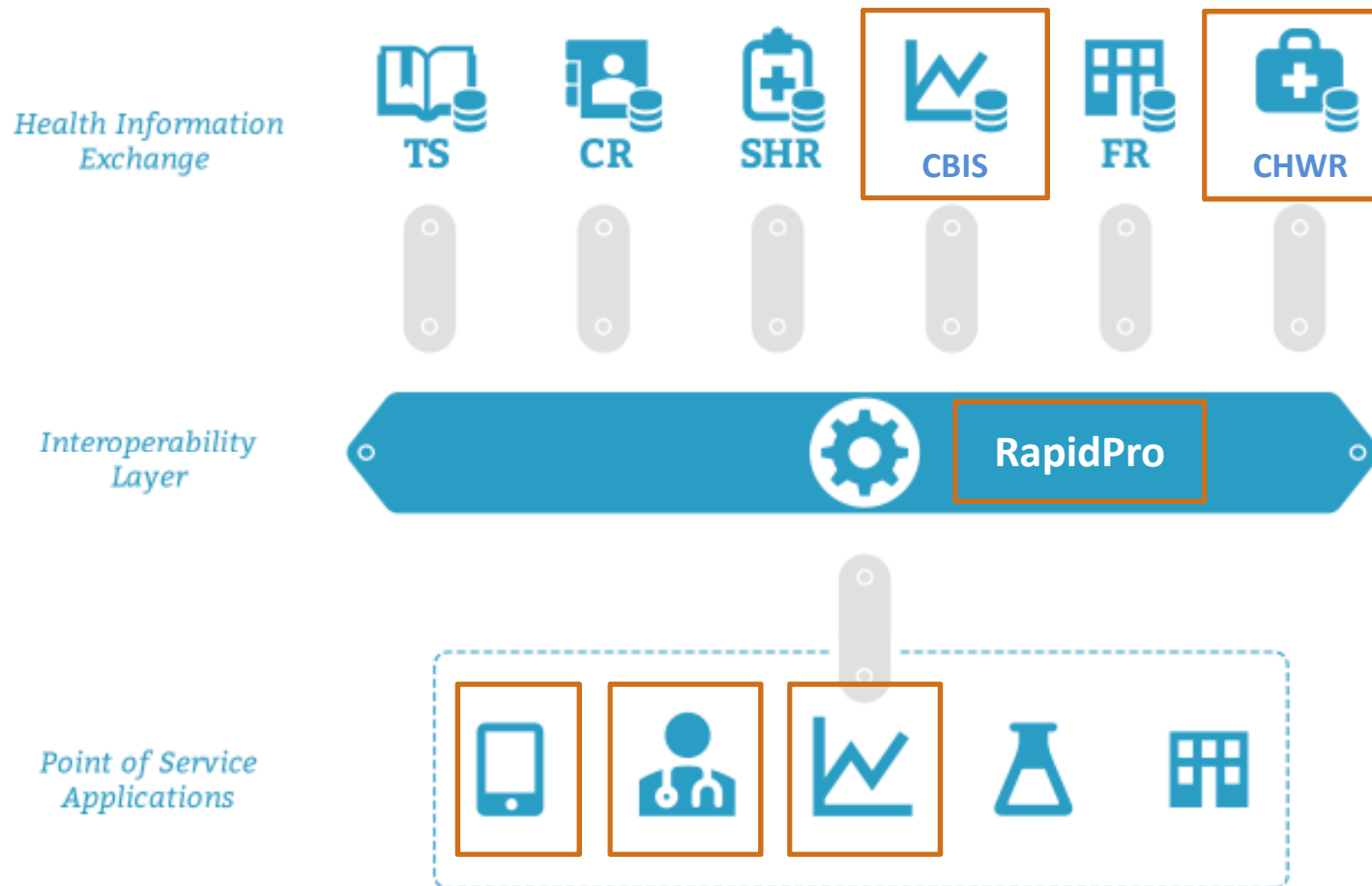
- Weekly quizzes post radio shows
- Reporting if radio show did not occur
- Radio show listing
- Sending of questions and comments
- Activities report
- Program Baseline and Endline Assessments



mHero Data Flows



mHero & Community Health Information Systems



Connecting Community Health Workers to their Support System



Connecting Community Health Workers to their Support System

Optimizing existing
resources

- Utilizing existing resources to create the mHero communication platform
- Integration of SMS communication into current procedures, processes and activities

Connecting Community Health Workers to their Support System

- Organizational development and institutional behavior change on use of the mHero communication platform
- Individual behavior change on use of SMS to communicate with their support system
- Use of mHero for sharing of information and exchanges for problem solving

Capacity building

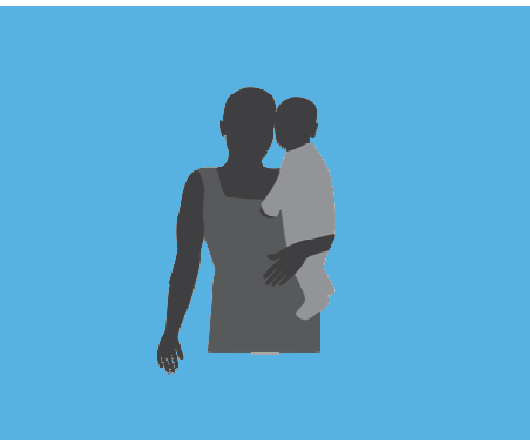
Connecting Community Health Workers to their Support System

Generating and
using data

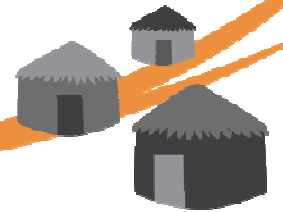
- Tailor interventions and support provided to Community Health Workers
- Enhance the capacity of the system to respond
- Supplement data analytics, regular reporting and alert/early warning systems
-

Connecting Community Health Workers to their Support System





Institutionalizing Community Health Conference



27-30 March 2017 | Johannesburg, South Africa



#HealthForAll
ichc2017.org