



Lessons Learned from CHW Symposium- Implementing Partners Perspective

Kenneth Nyehoora Mugumya - ISS-CHW Program Coordinator



USAID
FROM THE AMERICAN PEOPLE

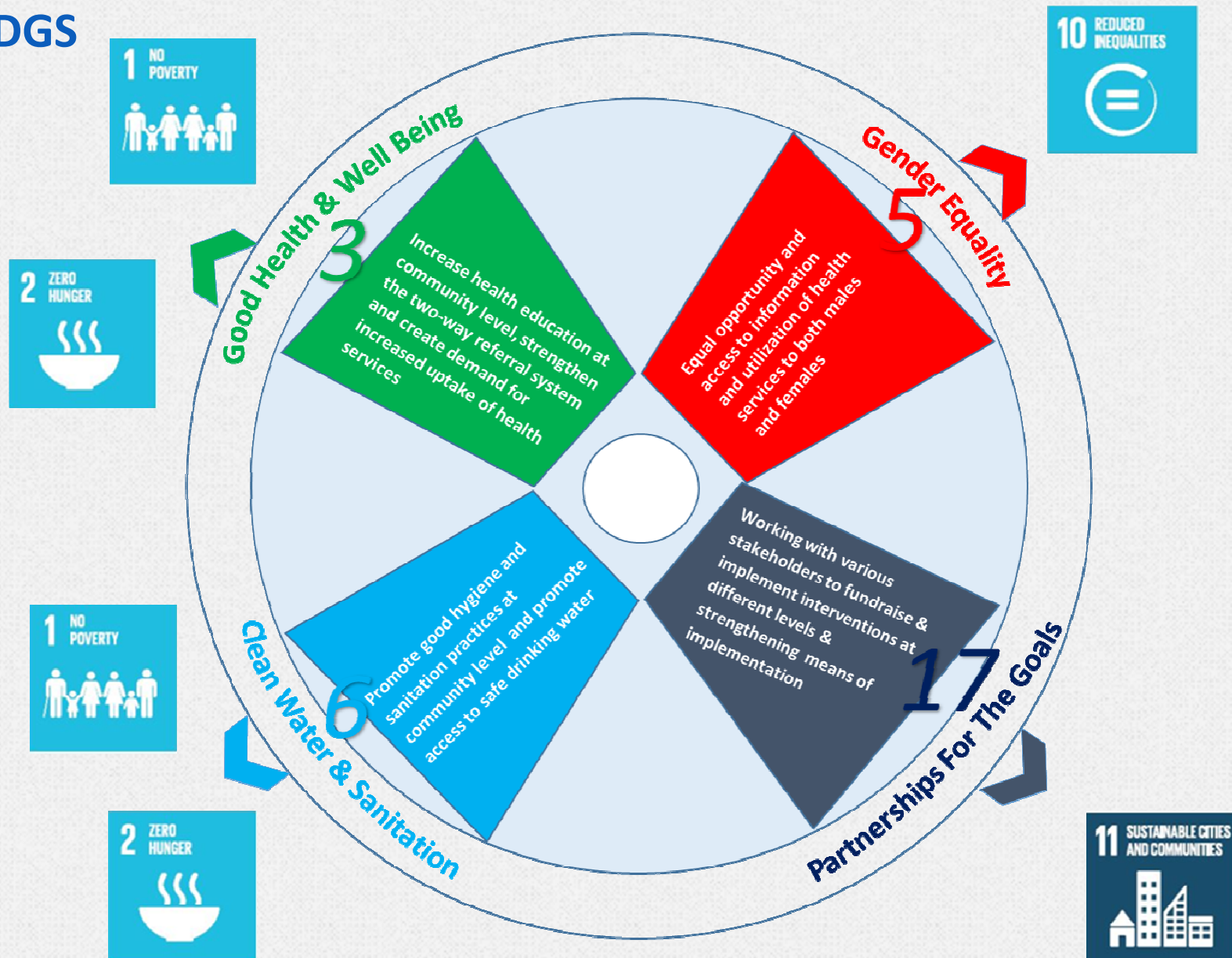


WHAT ROLE CAN CHWs PLAY TO HELP ACHIEVE THE SDGS?

- CHWs continued to play a vital role in the health systems of developed countries, as such this cadre requires further investment to help countries achieve their SDG goals.
- CHWs *actively and successfully* contribute to:
 - ✓ ***Increasing demand for health services***
 - ✓ ***Strengthening community-facility linkages***
 - ✓ ***Supporting effective referrals and follow up and in providing defined services.***
- CHWs continue to play a pivotal role in supporting the provision of comprehensive health and non-health services and information at the both the household and community levels respectively.



SYMPOSIUM PRESENTATIONS AND DISCUSSIONS LINKED CHWS TO SDGS



Key Area	Key Recommendations
Institutionalization of CHWs	<ul style="list-style-type: none"> • Develop a costed implementation plan for CHWs work to strengthen planning, implementation, accountability and motivation.
Financing	<ul style="list-style-type: none"> • Govt commitment to finance, plan, operationalize, train and supervise CHWs. • Govt call for Donor support towards CHW work. • Govt to allocate specific budget lines for CHW activities right from the National level to the lowest local govt level.
Monitoring and Supervision	<ul style="list-style-type: none"> • Functional database for CHWs • Establish coordination structures at all levels of govt. • Establish supervision, monitoring and evaluation plan for VHT programme

Key Area	Key Recommendations
Capacity Building	<ul style="list-style-type: none"> • Training of CHWs should be systematic, harmonized and well supervised by DHTs and Local Government. • Adhere to selection and training guidelines of CHWs. • Consider sufficient time for CHWs training with more focus on preventative Vs curative as per Presidential directive. • Ensure adherence to timely and regular duration of training (refresher trainings).
Working environment	<ul style="list-style-type: none"> • Ensure equitable distribution of logistics to CHWs. • Mechanisms to ensure CHWs are respected, recognized and accepted through proper training and official appointment by MoH • Sensitize health workers and the community members on the key roles and responsibilities of CHWs. • Support economic development opportunities for CHWs, e.g. SACCOS,



BEST PRACTICES IN ACTION

- CHEW program that government of Uganda is spearheading with support from USAID and other partners
- Conducive and collaborative working environment among implementing partners (IPs). E.g. Pathfinder International with UNICEF and IntraHealth.
- Coordinating activities amongst IPs encourages leveraging of financial resources to improve efficiency while avoiding duplication of efforts. E.g National Coordination Committee, Technical working groups etc



PARTING SHOT


- By adopting a multi-sectoral approach, IPs will play a key role to strengthen CHW potential to further contribute to other SDGs.
- CHWs can successfully implement a holistic approach by coordinating Ips support for CHWs program.
- Future symposiums are necessary and beneficial to health systems strengthening.





 twitter.com/PathfinderInt

 facebook.com/PathfinderInternational

 Youtube/user/PathfinderInt

For more information contact Eileen Mokaya
at: Kmugumya@pathfinder.org

